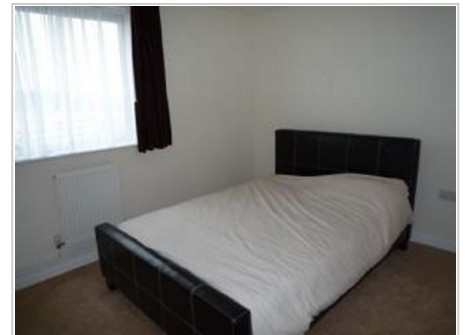


53 New Life Apartments
Crispin Street
Northampton
Northamptonshire.
NN1 2JH

£80,000



- Two Bedroom
- Tenth Floor
- Immaculate Internal Order
- Balcony
- Double Glazed
- Immediate Viewing Essential

Ref: PRA10300

Viewing Instructions: Strictly By Appointment Only

General Description

**** GET ON THE LADDER **** We are delighted to offer for sale this tenth floor two bedroom apartment Situated within the Town Centre. The property comprises: entrance hall, lounge, fitted kitchen with appliances, one double bedroom with modern furnishings, 1 single bedroom and a fitted bathroom. An internal viewing is highly recommended.

Accommodation

Services

Mains electricity, mains water, mains drainage

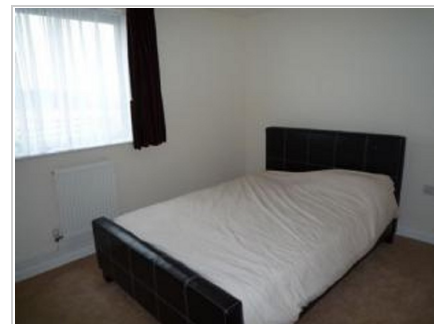
EPC Rating:79

Tenure

We are informed that the tenure is Leasehold

Council Tax

Band Not Specified



All measurements are approximate. The deeds have not been inspected. Please note that we have not tested the services of any of the equipment or appliances in this property. Stamp duty is not payable up to £125,000. From £125,001 to £250,000 - 2% of Purchase Price. From £250,001 to £925,000 - 5% of Purchase Price. From £925,001 to £1,500,000 - 10% of Purchase Price. From £1,500,001 onwards - 12% of Purchase Price. N.B. Stamp Duty is paid by the purchaser and not the vendor. Proceeds Of Crime Act 2002: We are obliged to report any knowledge or suspicion of money laundering to NCIS (National Crime Intelligence Service) and should a report prove necessary we are precluded from conducting any further professional work without consent from NCIS. These particulars are issued in good faith by us from information supplied by the vendor, but the accuracy is not guaranteed, nor will we accept responsibility for any error therein, nor shall the particulars form part of any contract. These particulars are also issued on the understanding that any negotiations in respect of the purchase of this property shall be carried out through us. Your home is at risk if you do not keep up repayments on a mortgage or any other loan secured on it. An insurance contract may be required. Written quotation available upon request. Mortgages secured on property.

Energy Performance Certificate



53 Newlife Apartments
Crispin Street
NORTHAMPTON
NN1 2JH

Dwelling type:
Date of assessment:
Date of certificate:
Reference number:
Type of assessment:
Total floor area:

Top-floor flat
30 June 2011
30 March 2012
7508-9095-6256-4569-2954
RdSAP, existing dwelling
60 m²

This home's performance is rated in terms of the energy use per square metre of floor area, energy efficiency based on fuel costs and environmental impact based on carbon dioxide (CO₂) emissions.

Energy Efficiency Rating

	Current	Potential
Very energy efficient - lower running costs		
(92 plus) A		
(81-91) B		
(69-80) C	79	79
(55-68) D		
(39-54) E		
(21-38) F		
(1-20) G		
Not energy efficient - higher running costs		
England & Wales	EU Directive 2002/91/EC	

The energy efficiency rating is a measure of the overall efficiency of a home. The higher the rating the more energy efficient the home is and the lower the fuel bills are likely to be.

Environment Impact (CO₂) Rating

	Current	Potential
Very environmentally friendly - lower CO ₂ emissions		
(92 plus) A		
(81-91) B	81	81
(69-80) C		
(55-68) D		
(39-54) E		
(21-38) F		
(1-20) G		
Not environmentally friendly - higher CO ₂ emissions		
England & Wales	EU Directive 2002/91/EC	

The environmental impact rating is a measure of a home's impact on the environment in terms of carbon dioxide (CO₂) emissions. The higher the rating the less impact it has on the environment.

Estimated energy use, carbon dioxide (CO₂) emissions and fuel costs of this home

	Current	Potential
Energy use	127 kWh/m ² per year	127 kWh/m ² per year
Carbon dioxide emissions	1.5 tonnes per year	1.5 tonnes per year
Lighting	£38 per year	£38 per year
Heating	£227 per year	£227 per year
Hot water	£97 per year	£97 per year

The figures in the table above have been provided to enable prospective buyers and tenants to compare the fuel costs and carbon emissions of one home with another. To enable this comparison the figures have been calculated using standardised running conditions (heating periods, room temperatures, etc.) that are the same for all homes, consequently they are unlikely to match an occupier's actual fuel bills and carbon emissions in practise. The figures do not include the impacts of the fuels used for cooking or running appliances, such as TV, fridge etc.; nor do they reflect the costs associated with service, maintenance or safety inspections. Always check the certificate date because fuel prices can change over time and energy saving recommendations will evolve.



Remember to look for the Energy Saving Trust Recommended logo when buying energy-efficient products. It's a quick and easy way to identify the most energy-efficient products on the market.

This EPC and recommendations report may be given to the Energy Saving Trust to provide you with information on improving your dwelling's energy performance.